

Engaging Legislative Champions in Florida

Presentation by
Wilhelmina A. Leigh
Melissa Wells

Joint Center for Political and Economic Studies
at

RAISE Florida Network
First Quarter Regional Meeting

Tallahassee, Florida

March 13, 2013



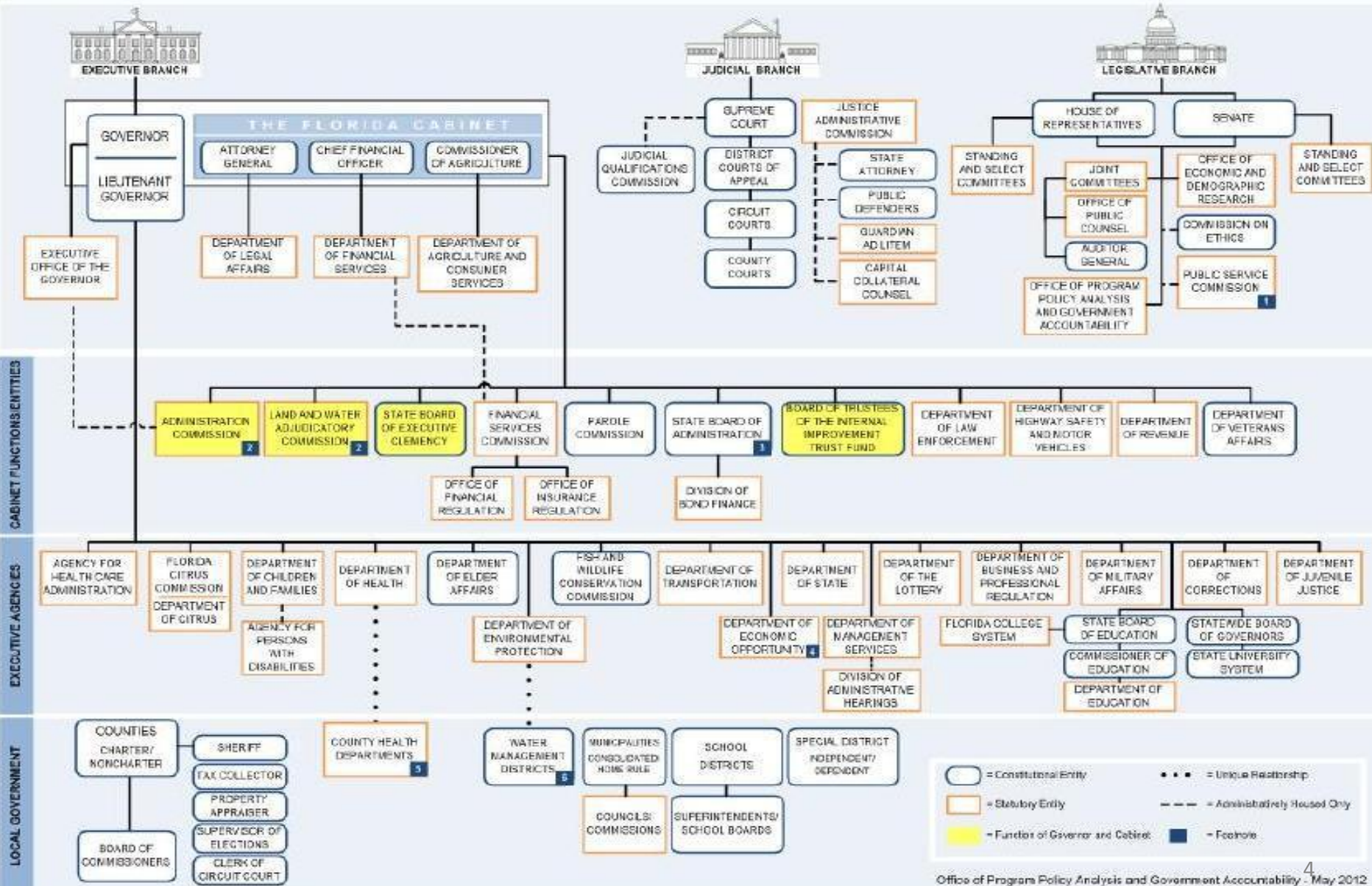
Presentation Outline

- Legislative Process in Florida
- How to Identify Legislative Champions
- Doing Your “Homework” on Legislators
- Action Steps

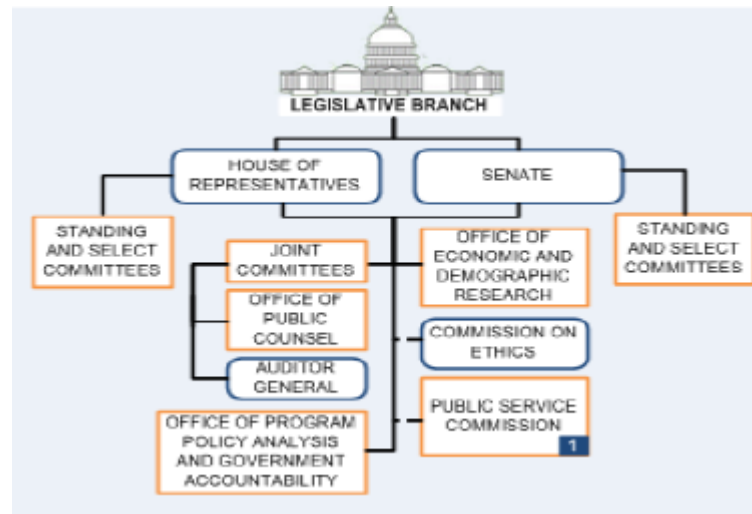


Legislative Process in Florida

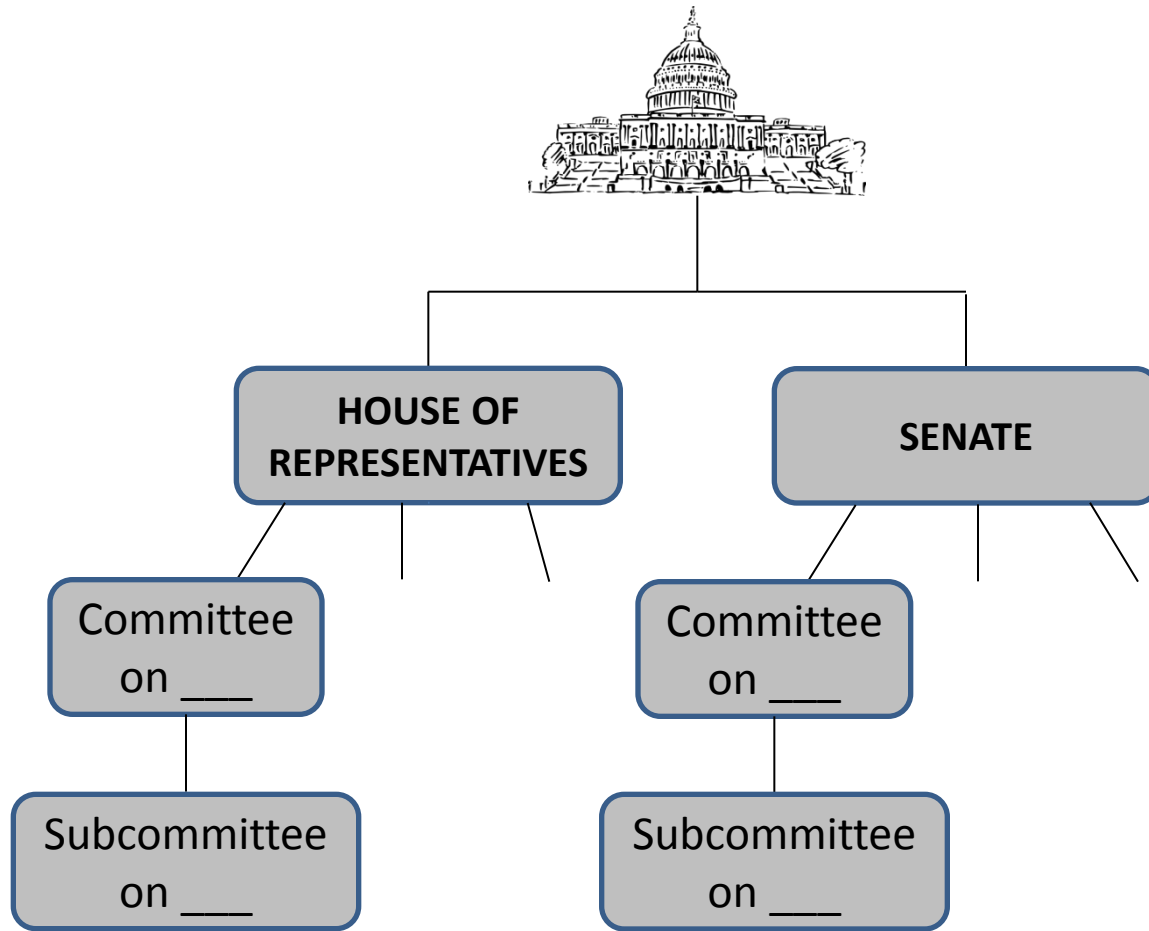
Florida State Government



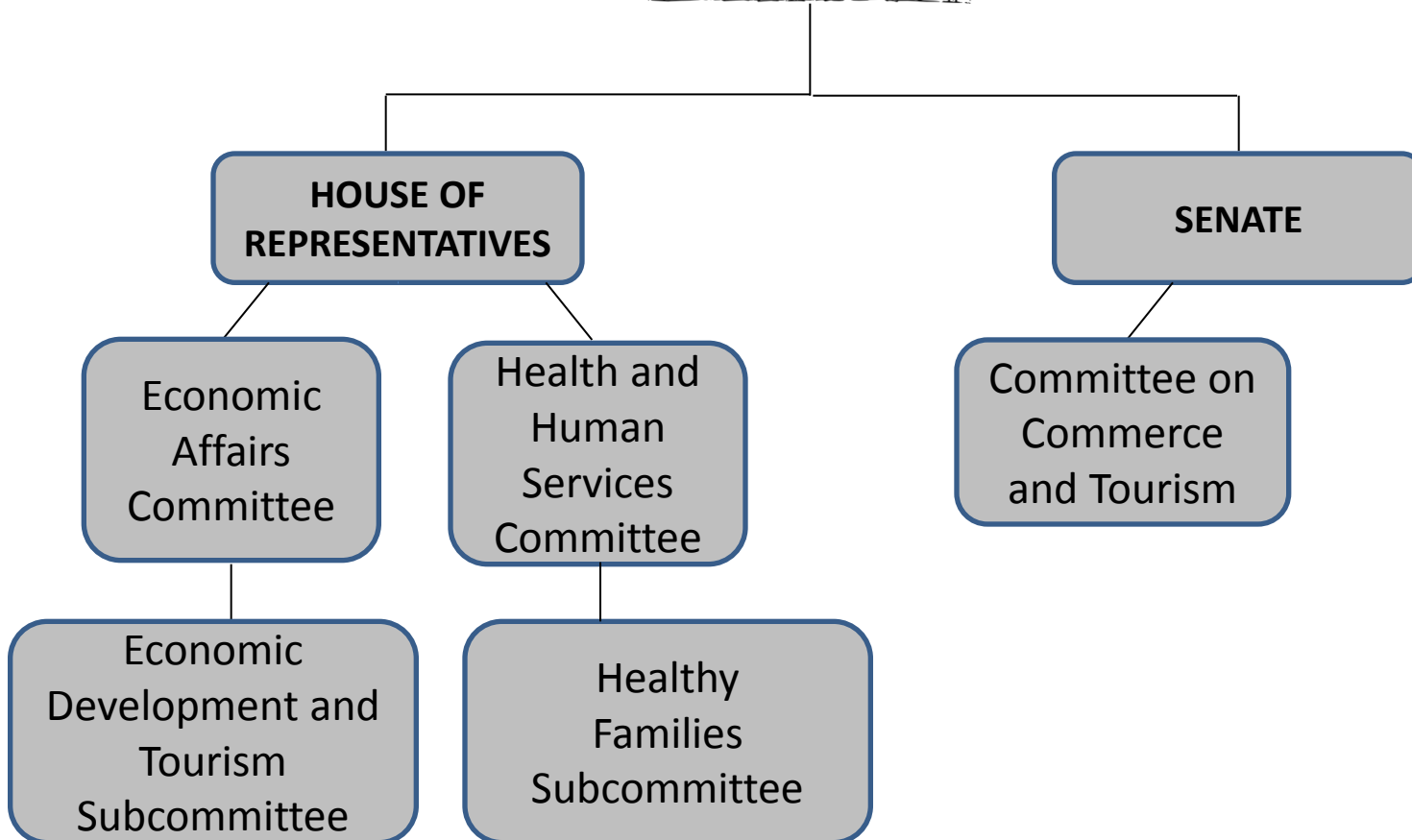
Florida's Legislative Branch



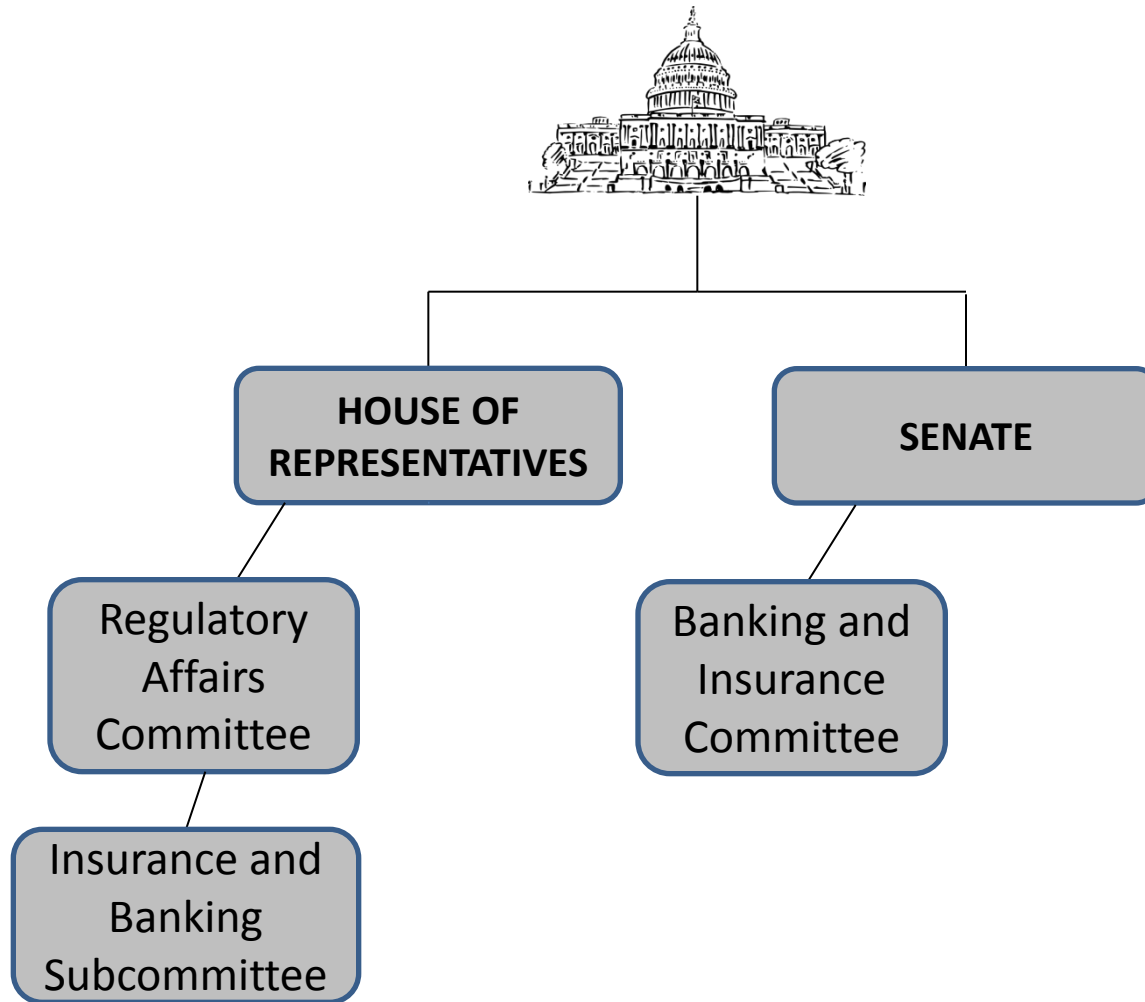
Legislative Committee Structure



IDA Funding: Relevant Committees



Predatory Lending Protection: Relevant Committees





How to Identify Legislative Champions

Step One

Determine the legislators who represent you and the legislators who serve on the committees and subcommittees relevant to your interests

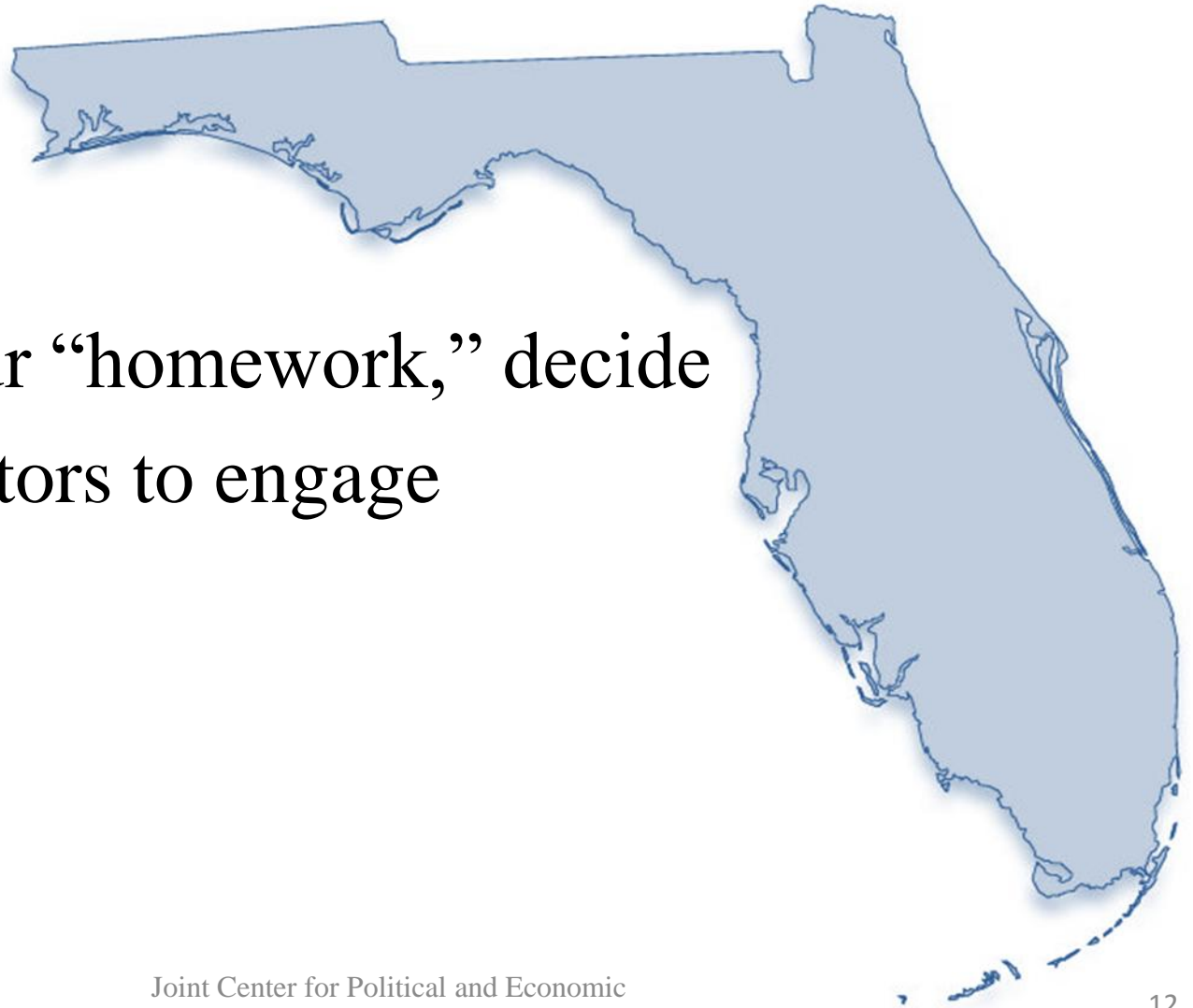


Step Two

- Do your “homework” on these legislators. Explore the following:
 - ... population mix in districts of legislators
 - ... needs in districts of legislators
 - ... previously sponsored relevant legislation
 - ... personal and professional connections
 - ... information from other kindred organizations

Step Three

Based on your “homework,” decide which legislators to engage

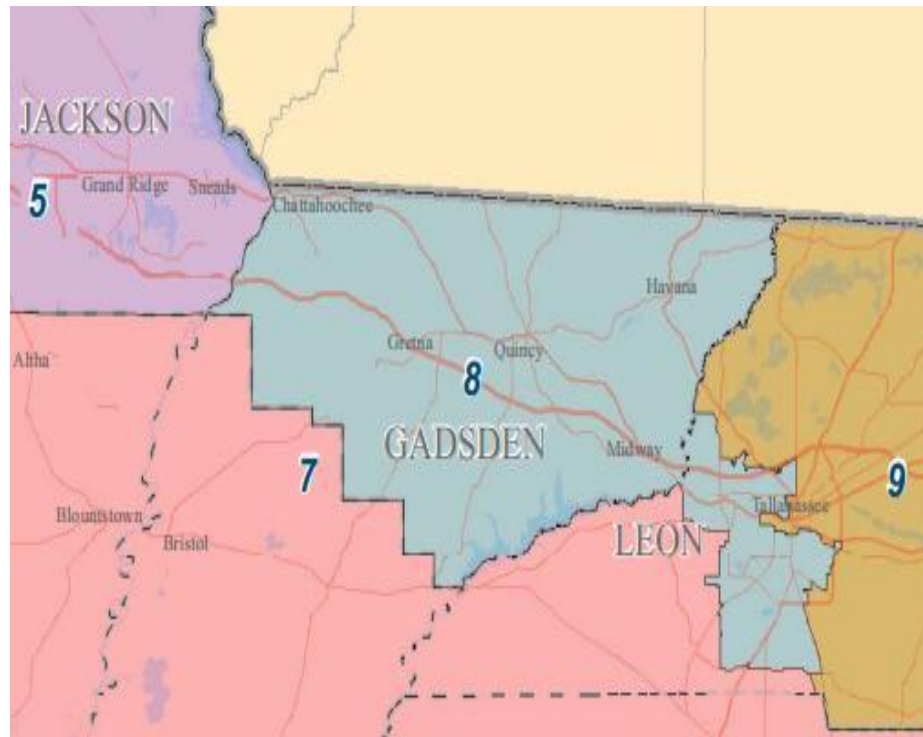




Doing Your “Homework” on Legislators

State District – 08

Florida House of Representatives



Rep. Alan B. Williams (D-08)

Democratic Whip

Committee Assignments

- Economic Affairs Committee (Dem. Ranking Member)
- Energy & Utilities Subcommittee (Dem. Ranking Member) of Regulatory Affairs Committee
- Appropriations Committee
- Ethics & Elections Subcommittee (of State Affairs Committee)
- Regulatory Affairs Committee



Rep. Alan B. Williams (D-08)

Democratic Whip

Caucuses/Other Memberships

- Florida Black Legislative Caucus (Vice Chair)
- Airport Advisory Board, City of Tallahassee
- Florida Selective Service Board
- Florida Advisory Committee, United States Commission on Civil Rights

Relevant Legislation Sponsored by Member

- Sponsored bill to regulate the debt buyer industry and collection practices (HB 1399)



State Senate Representation for Area Covered by House District 08

Committee Assignments

- Appropriations Subcommittee on Education (Vice Chair)
- Committee on Education (Vice Chair)
- Appropriations Subcommittee on Health and Human Services
- Committee on Appropriations
- Committee on Banking and Insurance
- Committee on Gaming
- Committee on Governmental Oversight and Accountability
- Committee on Rules

Caucuses/Other Memberships

- The Village Square (Board of Directors)
- Big Bend Hospice (Board of Directors)
- Tallahassee Chamber of Commerce (Executive Committee)
- 100 Black Men of Tallahassee
- Big Bend Job and Education Council
- Florida TaxWatch Center for Educational Performance and Accountability



Sen. Bill Montford (D-03)

U.S. Congressional Representation



Rep. Steve Southerland (R-02)

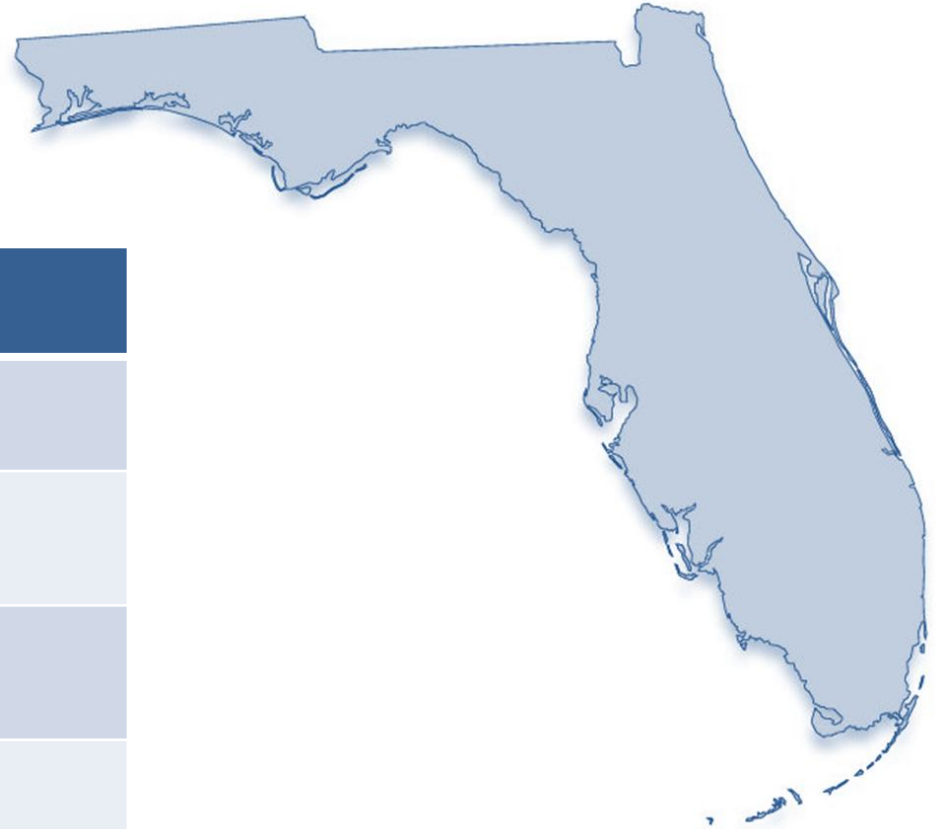


Sen. Bill Nelson (D-FL)



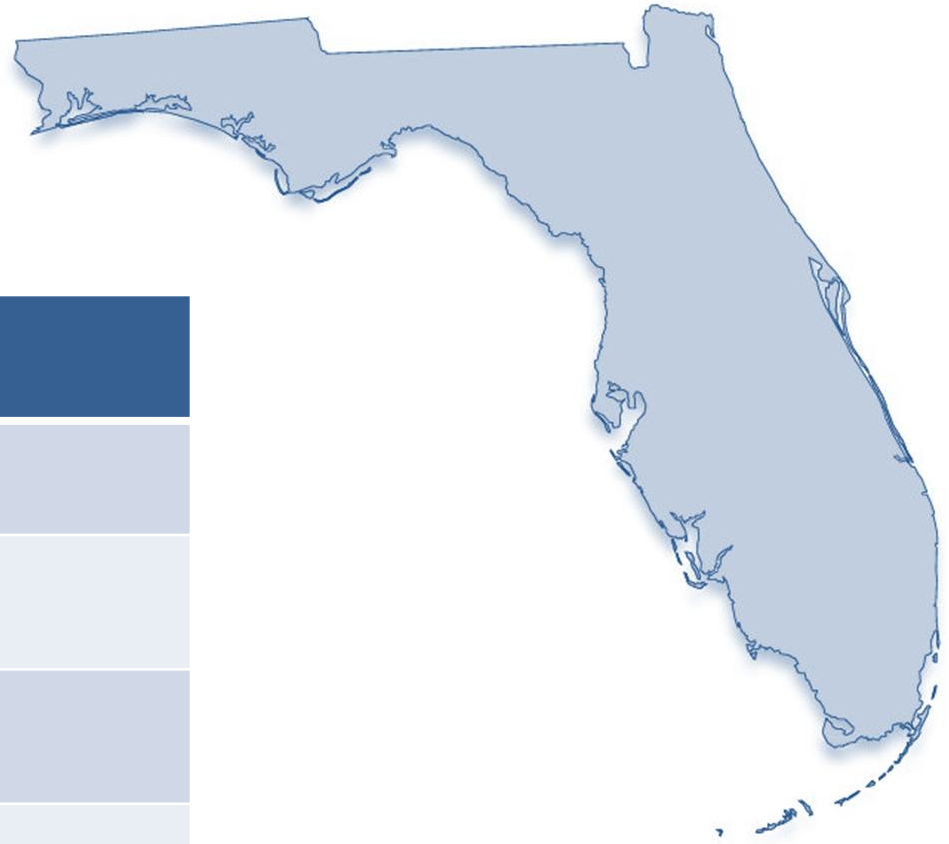
Sen. Marco Rubio (R-FL)

County Characteristics



Gadsden County (2011)	
Median Income	\$33,453
People In Poverty	27.6%
Black Population	56%
Latino Population	9.5%
Foreclosure Rate	1 in every 626 housing units

County Characteristics

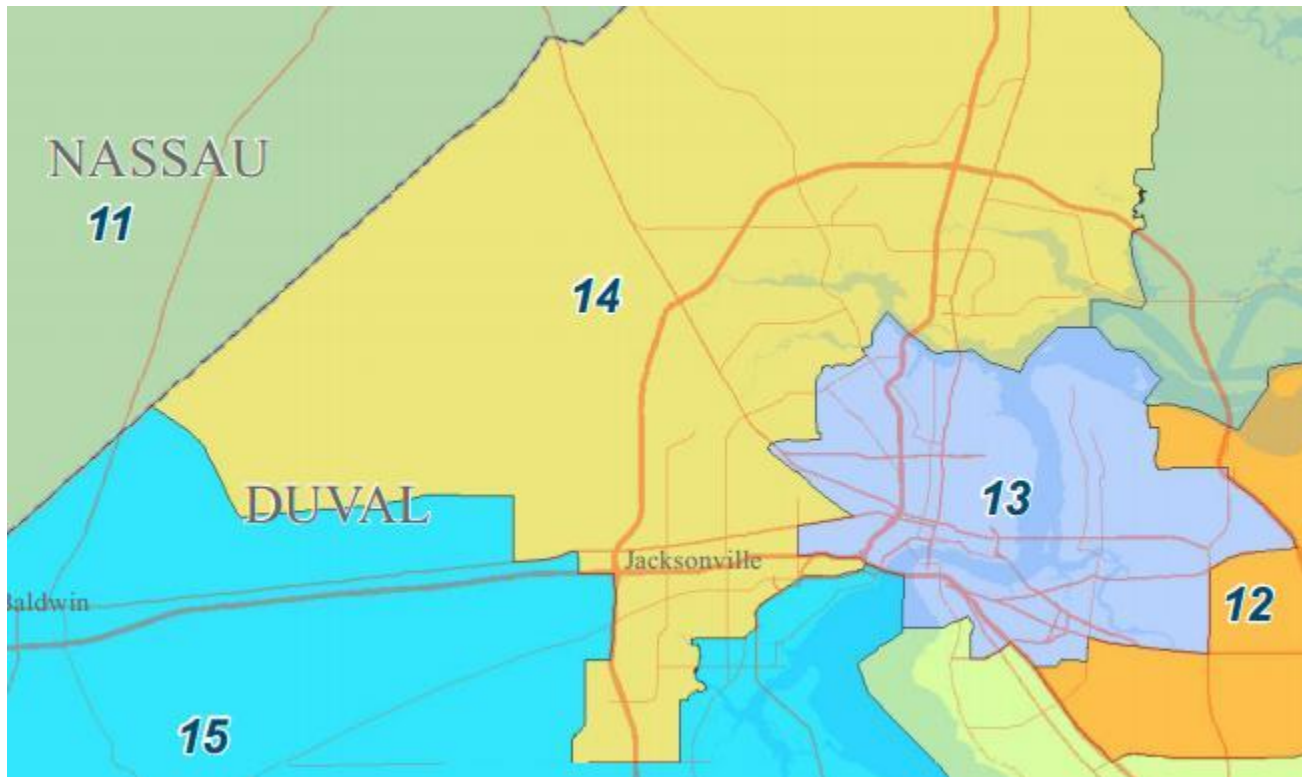


Leon County (2011)

Median Income	\$45,827
People in Poverty	22%
Black Population	30.3%
Latino Population	5.6%
Foreclosure Rate	1 in every 972 housing units

State District -14

Florida House of Representatives



Rep. Mia L. Jones (D-14)

Democratic Leader Pro Tempore

Committee Assignments

- Health & Human Services Committee (Democratic Ranking Member)
- Appropriations Committee
- Education Appropriations Subcommittee
- Health Innovation Subcommittee (of Health and Human Services Committee)
- Select Committee on Patient Protection and Affordable Care Act



Rep. Mia L. Jones (D-14)

Democratic Leader Pro Tempore

Caucuses/Other Memberships

- Florida Legislative Black Caucus
- Florida Black Caucus of Local Elected Officials
- Jacksonville Economic Development Commission (Duval Delegation Liaison)
- National Black Caucus of State Legislators (Regional Director)
- National Organization of Black Elected Legislative (NOBEL) Women (Treasurer)
- National Order of Women Legislators (NOWL) (State Director)



Relevant Legislation Sponsored by Member

- Sponsored Office of Minority Health bill (HB 459)

State Senate Representation for Area Covered by House District 14

Committee Assignments

- Committee on Health Policy (Chair)
- Committee on Appropriations
- Appropriations Subcommittee on Education
- Appropriations Subcommittee on Health and Human Services
- Committee on Commerce and Tourism
- Committee on Communications, Energy and Public Utilities
- Committee on Governmental Oversight and Accountability
- Select Committee on Patient Protection and Affordable Care Act

Caucuses/Other Memberships

- Nassau County YMCA (Board Member)
- Fernandina Beach Rotary Club
- United Way of Nassau County
- Big Brothers Big Sisters of Nassau County



Sen. Aaron Bean (R-04)

State Senate Representation for Area Covered by House District 14

Committee Assignments

- Committee on Military Affairs (Vice Chair)
- Appropriations Subcommittee on Health and Human Services
- Appropriations Subcommittee on Transportation, Tourism, and Economic Development
- Committee on Communications, Energy and Public Utilities
- Committee on Criminal Justice
- Committee on Regulated Industries
- Select Committee on Patient Protection and Affordable Care Act

Caucuses/Other Memberships

- Florida Legislative Black Caucus
- Duval Democratic Executive Committee
- The Bridge of Northeast Florida (Advisory Board)
- Manufacturers Community Advisory Panel (Charter Member)
- Northwest Jax CDC (Charter Member)
- Women in Government
- Women Legislators Lobby



Sen. Audrey Gibson (D-09)

U.S. Congressional Representation



Rep. Ander Crenshaw (R-04)

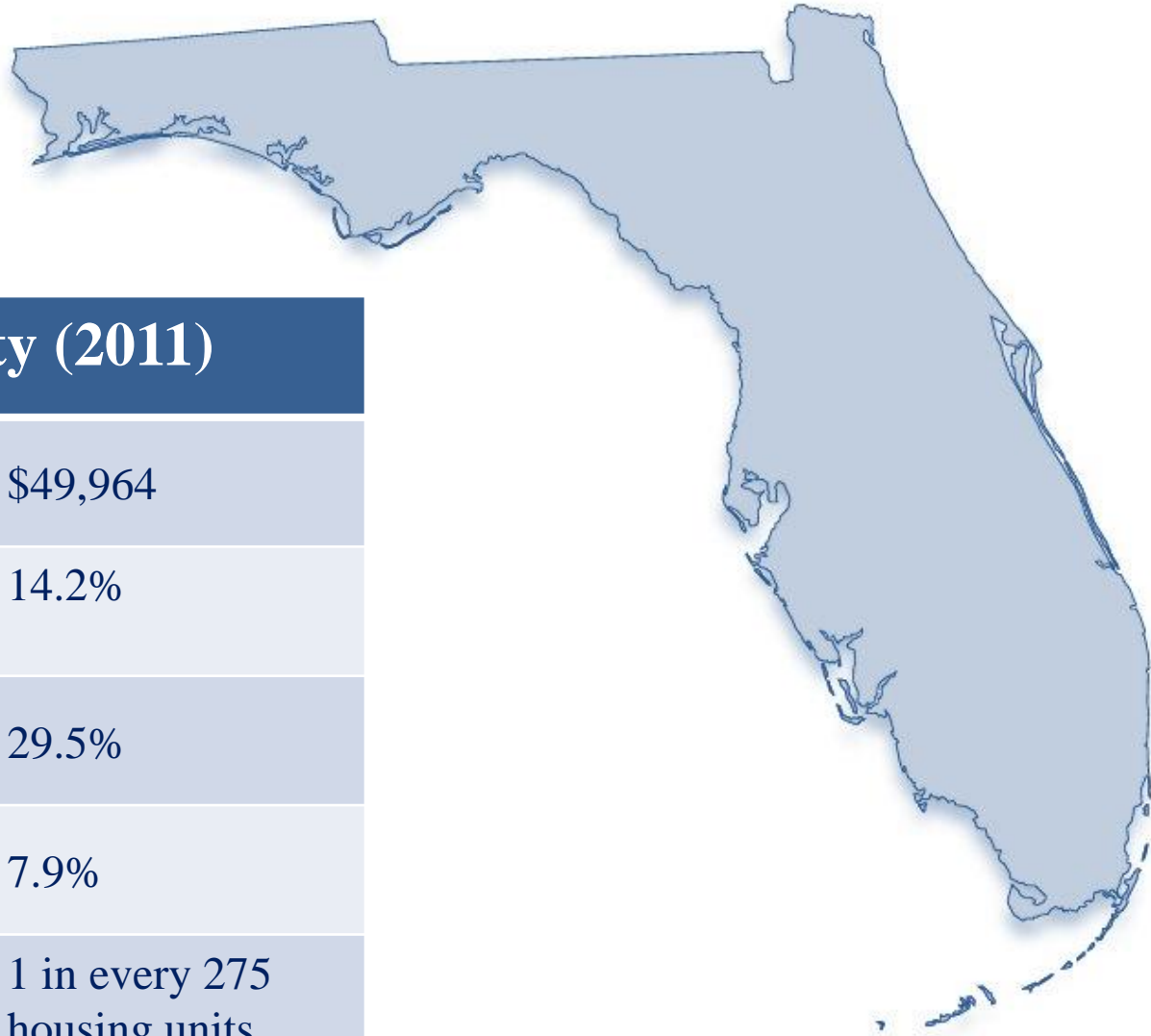


Sen. Bill Nelson (D-FL)



Sen. Marco Rubio (R-FL)

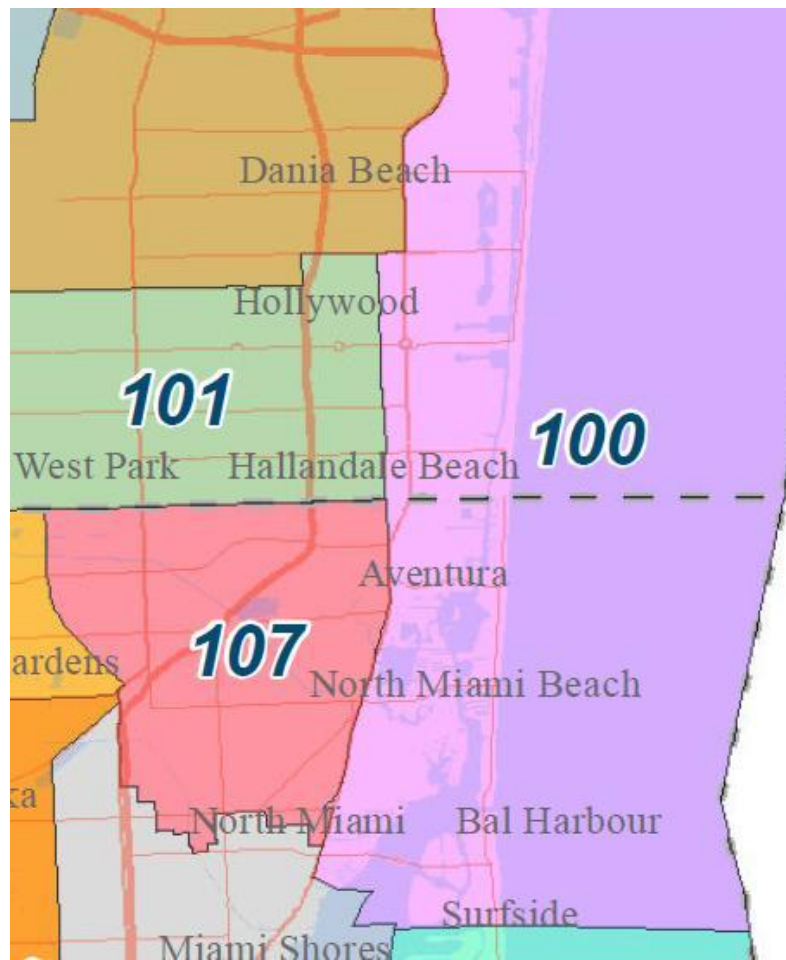
County Characteristics



Duval County (2011)	
Median Household Income	\$49,964
People In Poverty	14.2%
Black Population	29.5%
Latino Population	7.9%
Foreclosure Rate	1 in every 275 housing units

State District -100

Florida House of Representatives



Rep. Joseph Gibbons (D-100)

Committee Assignments

- Appropriations Committee (Dem. Ranking Member)
- Health Innovation Subcommittee (Dem. Ranking Member) of Health and Human Services Committee
- Business & Professional Regulation Subcommittee (of Regulatory Affairs Committee)
- Economic Affairs Committee
- Health & Human Services Committee
- Joint Legislative Budget Commission



Rep. Joseph Gibbons (D-100)

Caucuses/Other Memberships

- Florida Legislative Black Caucus
- Broward County Planning Council, 2006-present (Secretary)
- Areawide Council on Aging, 2005-present (Board Member)
- Broward County School Board, 2003-2005 (Advisory Committee)
- White House Conference on Small Business
- Broward County Planning Council, 2005-2006



Relevant Legislation Sponsored by Member

- Sponsored bill to regulate the title loans industry (HB 877)

State Senate Representation for Area Covered by House District 100

Committee Assignments

- Appropriations Subcommittee on Transportation, Tourism, and Economic Development (Vice Chair)
- Committee on Transportation (Vice Chair)
- Committee on Appropriations
- Appropriations Subcommittee on Finance and Tax
- Committee on Banking and Insurance
- Committee on Commerce and Tourism
- Committee on Gaming
- Committee on Rules
- Joint Legislative Budget Commission



Sen. Gwen Margolis (D-35)

State Senate Representation for Area Covered by House District 100

Committee Assignments

- Committee on Agriculture (Vice Chair)
- Appropriations Subcommittee on Education
- Appropriations Subcommittee on General Government
- Committee on Education
- Committee on Environmental Preservation and Conservation
- Committee on Military Affairs, Space, and Domestic Security
- Joint Administrative Procedures Committee

Caucuses/Other Memberships

- NAACP
- Ron Brown South Dade Democratic Caucus
- Democrats of South Dade
- Big Brothers/Big Sisters



Sen. Dwight Bullard (D-39)

U.S. Congressional Representation



Rep. Debbie Wasserman Schultz (D-23)



Rep. Frederica Wilson (D-24)

U.S. Congressional Representation

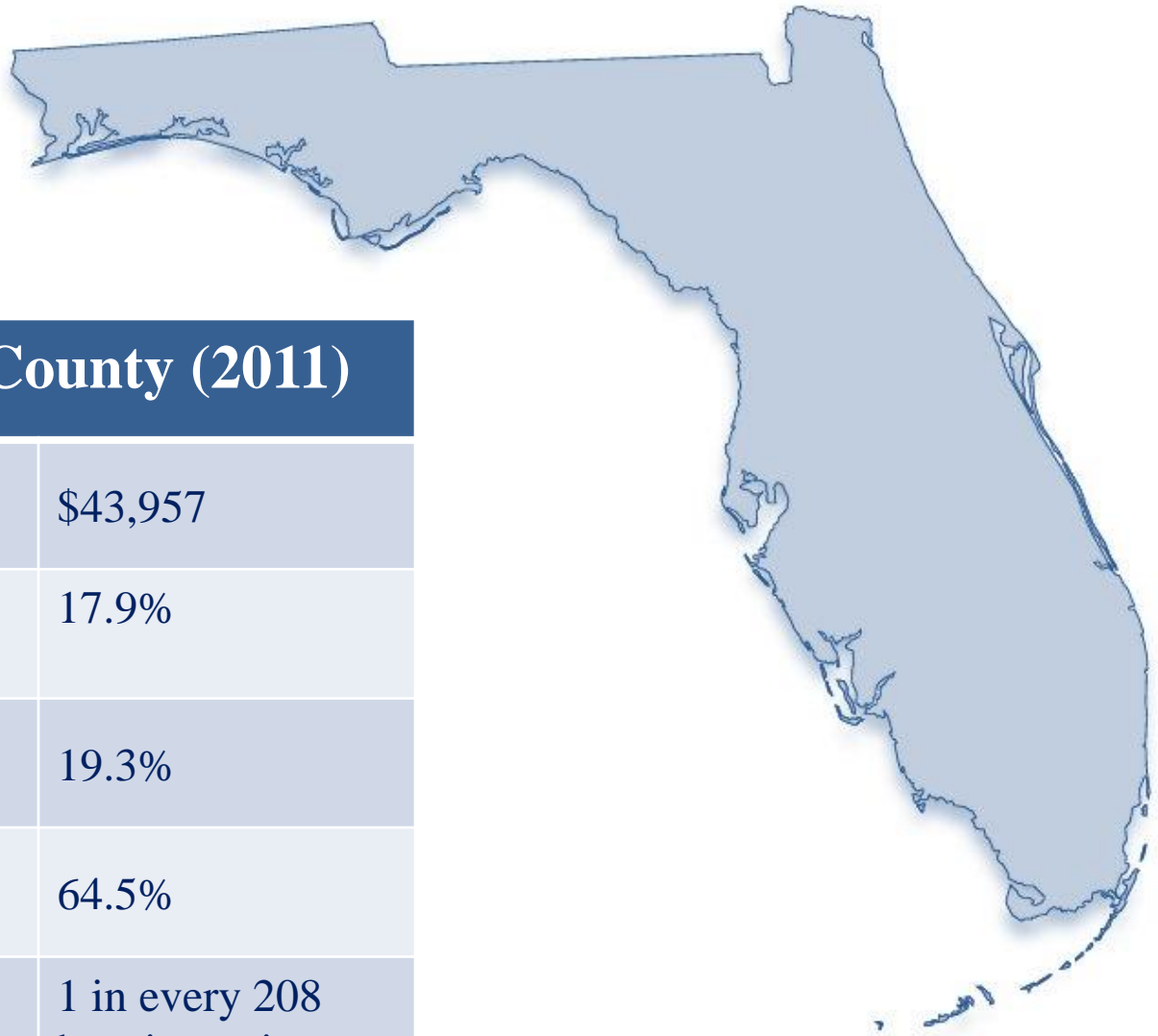


Sen. Bill Nelson (D-FL)



Sen. Marco Rubio (R-FL)

County Characteristics

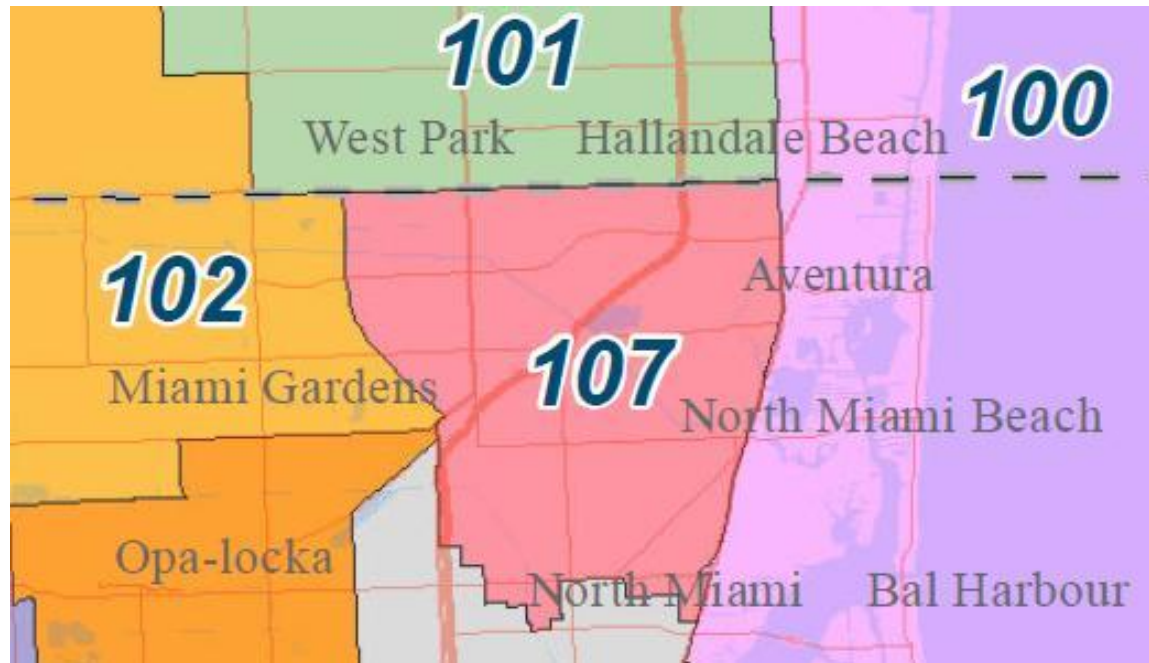


Miami-Dade County (2011)

Median Household Income	\$43,957
People In Poverty	17.9%
Black Population	19.3%
Latino Population	64.5%
Foreclosure Rate	1 in every 208 housing units

State District -107

Florida House of Representatives



Rep. Barbara Watson (D-107)

Committee Assignments

- Rulemaking Oversight & Repeal Subcommittee (Dem. Ranking Member) of Rules & Calendar Committee
- Regulatory Affairs Committee
- Energy & Utilities Subcommittee (of Regulatory Affairs Committee)
- Transportation & Highway Safety Subcommittee (of Economic Affairs Committee)



Rep. Barbara Watson (D-107)

Caucuses/Other Memberships

- Florida Legislative Black Caucus
- Broward-Dade Counties Transportation Task Force
- Committee to Incorporate Miami
- Dade/Broward Transportation Bridge
- Miami-Dade County North Dade Task Force
- Miami-Dade Task Force, District One
- National State and County League of Cities (Councilmember)
- North Dade Municipal Advisory Committee

Relevant Legislation Sponsored by Member

- Sponsored Fair Housing bill (HB 283)



State Senate Representation for Area Covered by House District 107

Committee Assignments

- Committee on Regulated Industries (Vice Chair)
- Appropriations Subcommittee on Criminal and Civil Justice
- Appropriations Subcommittee on General Government
- Committee on Children, Families, and Elder Affairs
- Committee on Ethics and Elections
- Committee on Gaming
- Committee on Health Policy

Caucuses/Other Memberships

- Florida Legislative Black Caucus
- Historic St. Agnes Episcopal Church
- Adrienne Arsht Center for the Performing Arts (Executive Board Member)
- 5000 Role Models



**Sen. Oscar Braynon II (D-36)
Democratic Whip**

U.S. Congressional Representation



Rep. Debbie Wasserman Schultz (D-23)

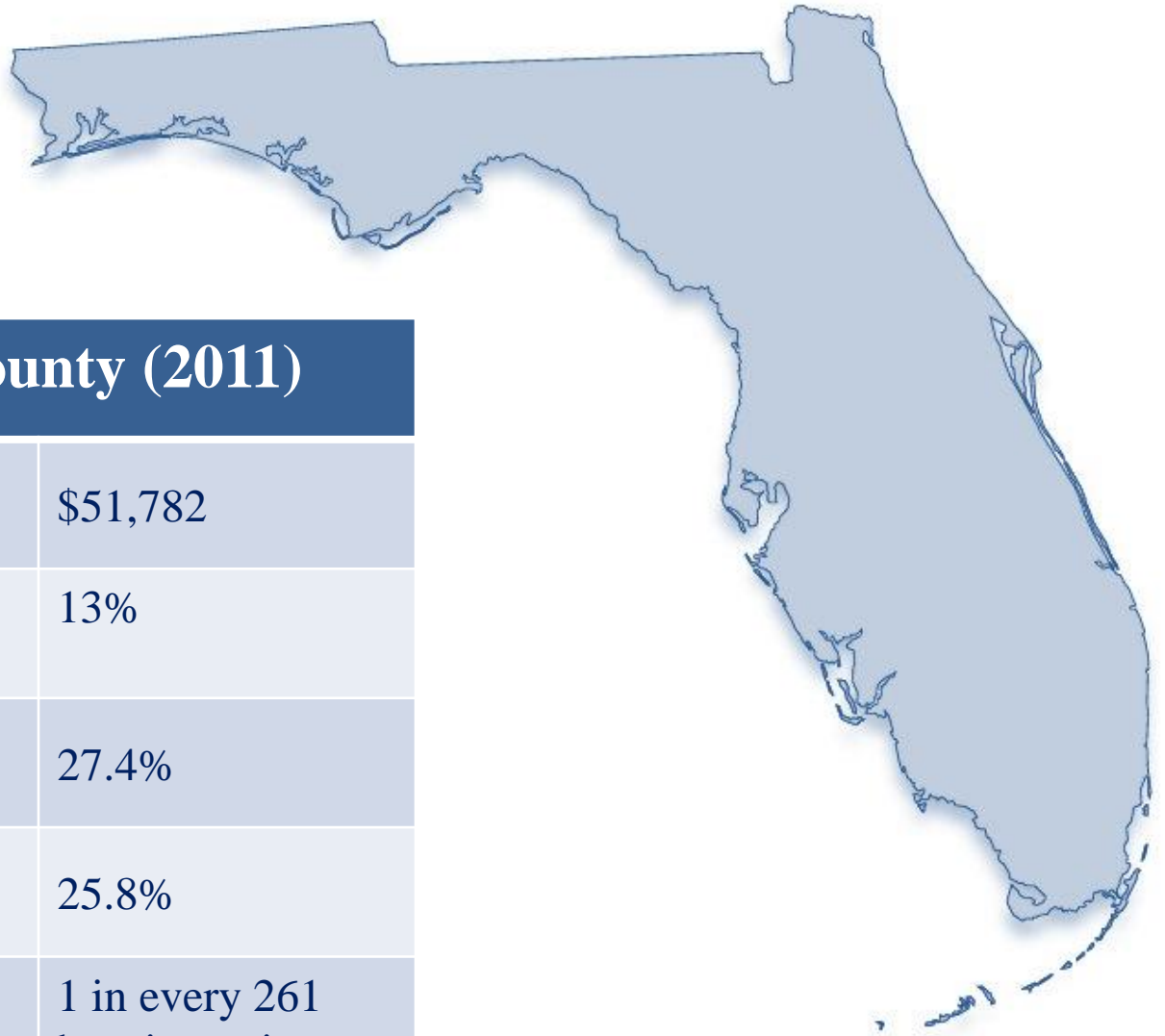


Sen. Bill Nelson (D-FL)



Sen. Marco Rubio (R-FL)

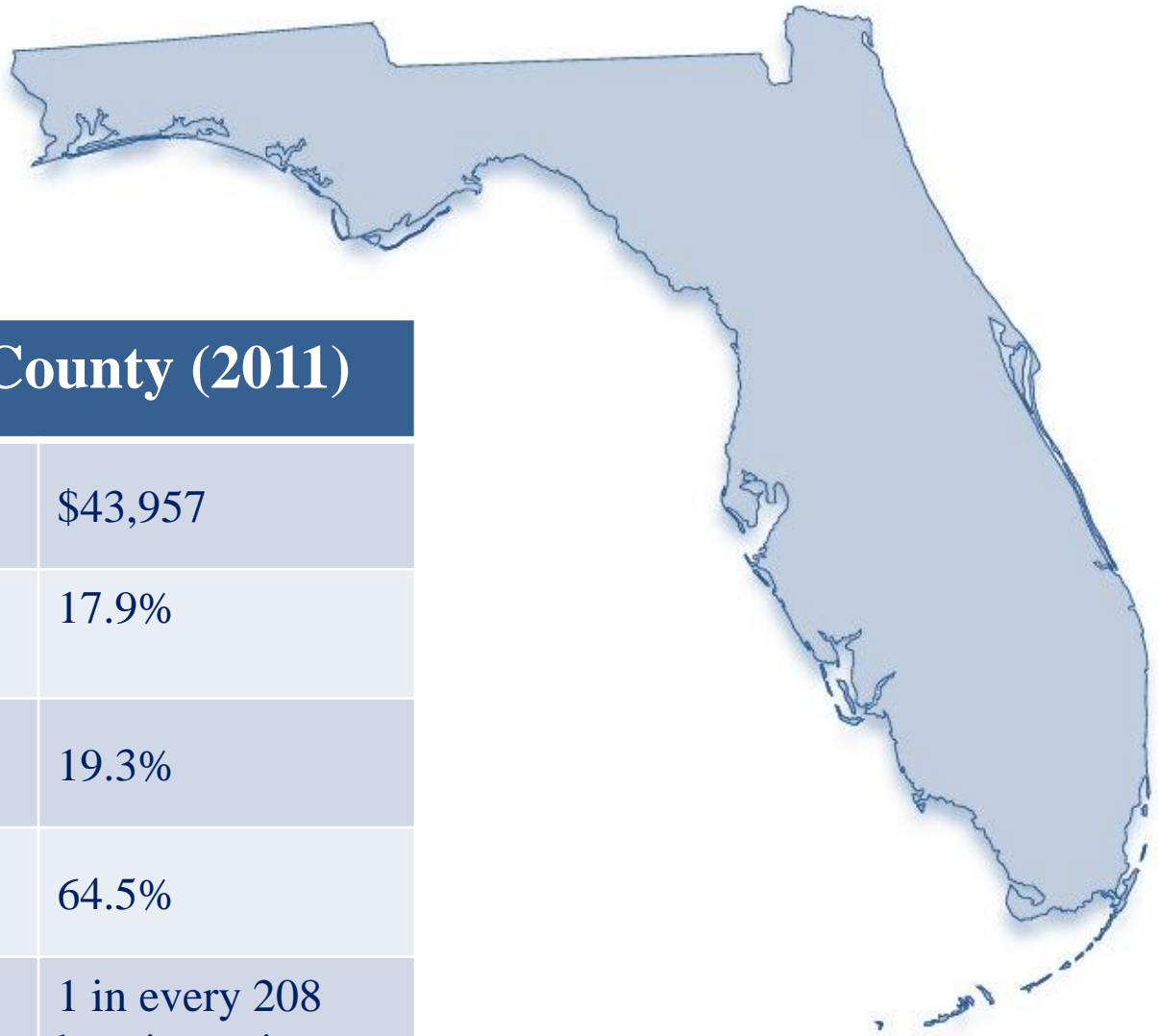
County Characteristics



Broward County (2011)

Median Household Income	\$51,782
People In Poverty	13%
Black Population	27.4%
Latino Population	25.8%
Foreclosure Rate	1 in every 261 housing units

County Characteristics

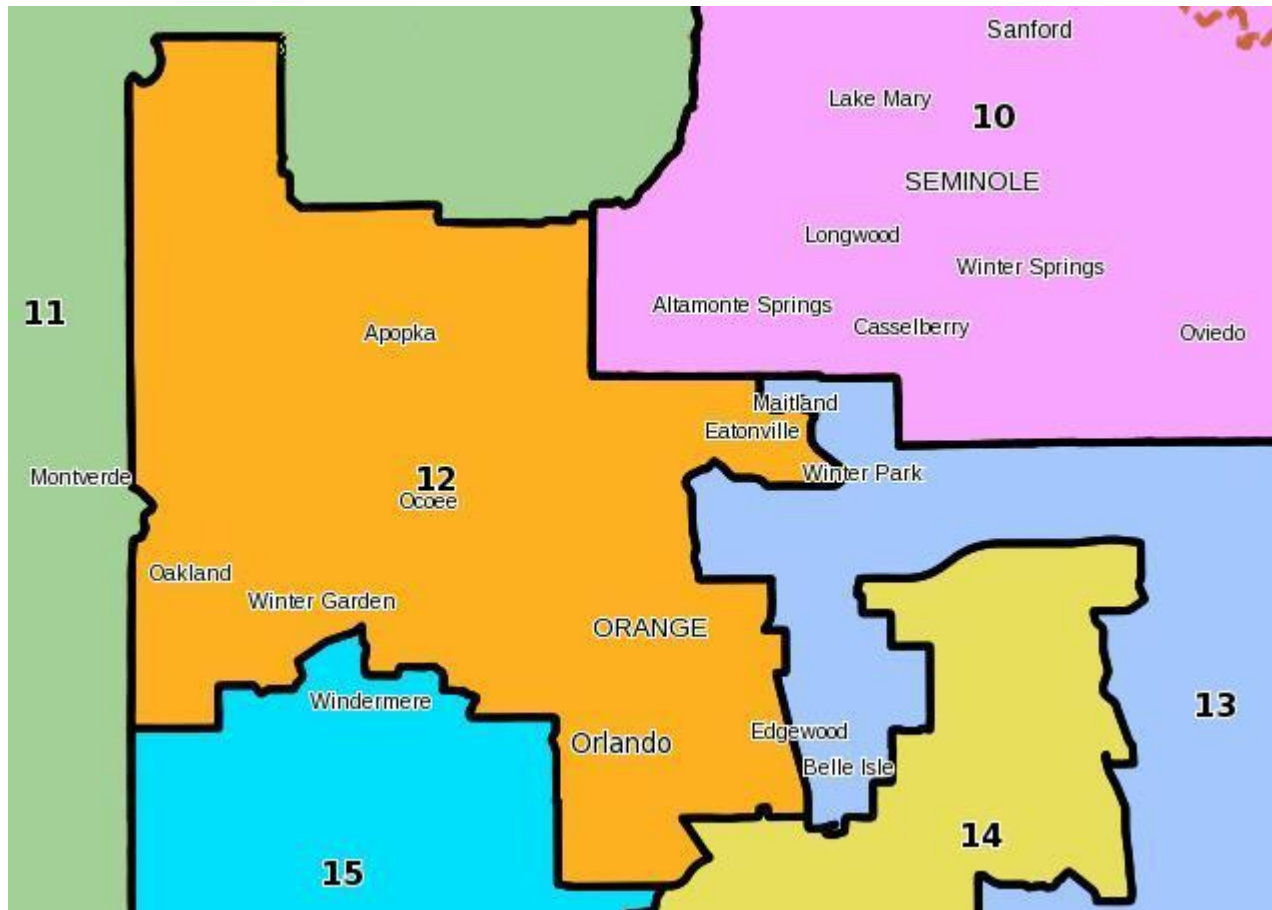


Miami-Dade County (2011)

Median Household Income	\$43,957
People In Poverty	17.9%
Black Population	19.3%
Latino Population	64.5%
Foreclosure Rate	1 in every 208 housing units

State District -12

Florida Senate



Sen. Geraldine Thompson (D-12)

Committee Assignments

- Appropriations Subcommittee on General Government (Vice Chair)
- Committee on Community Affairs (Vice Chair)
- Appropriations Subcommittee on Transportation, Tourism, and Economic Development
- Committee on Children, Families, and Elder Affairs
- Committee on Commerce and Tourism
- Committee on Transportation
- Joint Administrative Procedures Committee



Sen. Geraldine Thompson (D-12)

Caucuses/Other Memberships

- Florida Legislative Black Caucus
- National Foundation for Women Legislators (Florida Director)
- National Black Caucus of State Legislators (Executive Board)
- Orlando Children's Trust (Board Member)
- NAACP
- Links, Inc.



State House Representative for Area Covered by Senate District 12

Committee Assignments

- Local & Federal Affairs Committee
- Choice & Innovation Subcommittee (of Education Committee)
- Criminal Justice Subcommittee (of Judiciary Committee)
- Higher Education & Workforce Subcommittee (of Education Committee)
- K-12 Subcommittee (of Education Committee)

Caucuses/Other Memberships

- Florida Legislative Black Caucus
- National Association for the Advancement of Colored People (NAACP)
- New Covenant Baptist Church of Orlando



Rep. Randolph Bracy (D-45)

State House Representative for Area Covered by Senate District 12

Committee Assignments

- Government Operations Appropriations Subcommittee
(Dem. Ranking Member)
- Economic Development & Tourism Subcommittee
(of Economic Affairs Committee)
- Rulemaking Oversight & Repeal Subcommittee
(of Rules & Calendar Committee)
- Transportation & Economic Development Appropriations Subcommittee

Caucuses/Other Memberships

- Florida Legislative Black Caucus
- Carter Tabernacle CME Church
- National Association for the Advancement of Colored People (NAACP)
- Pine Hills Community Council
- Voters League



Rep. Bruce Antone (D-46)

State House Representative for Area Covered by Senate District 12

Committee Assignments

- Agriculture & Natural Resources Appropriations Subcommittee
- Regulatory Affairs Committee
- Select Committee on Claims Bills
- State Affairs Committee
- Transportation & Highway Safety Subcommittee
(of Economic Affairs Committee)

Caucuses/Other Memberships

- Orange County Parks and Recreation Board (Chair)
- Countywatch (Past Chairwoman)
- City of Orlando Parks Board
- Library Governance Board
- Orange County Canvassing Board
- Value Adjustment Board

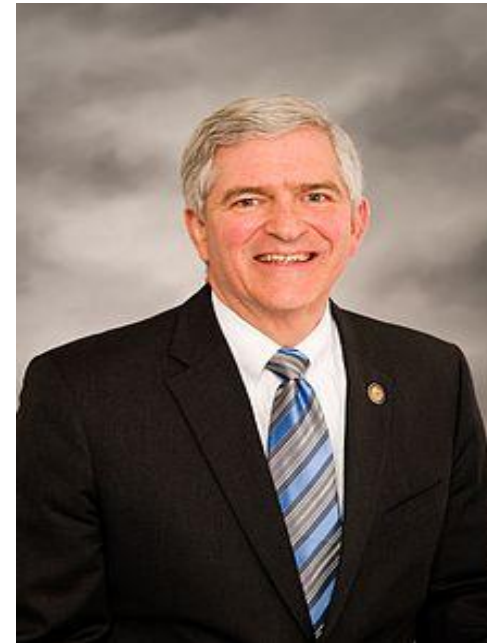


Rep. Linda Stewart (D-47)

U.S. Congressional Representation



Rep. John L. Mica (R-07)



Rep. Daniel Webster (R-10)

U.S. Congressional Representation

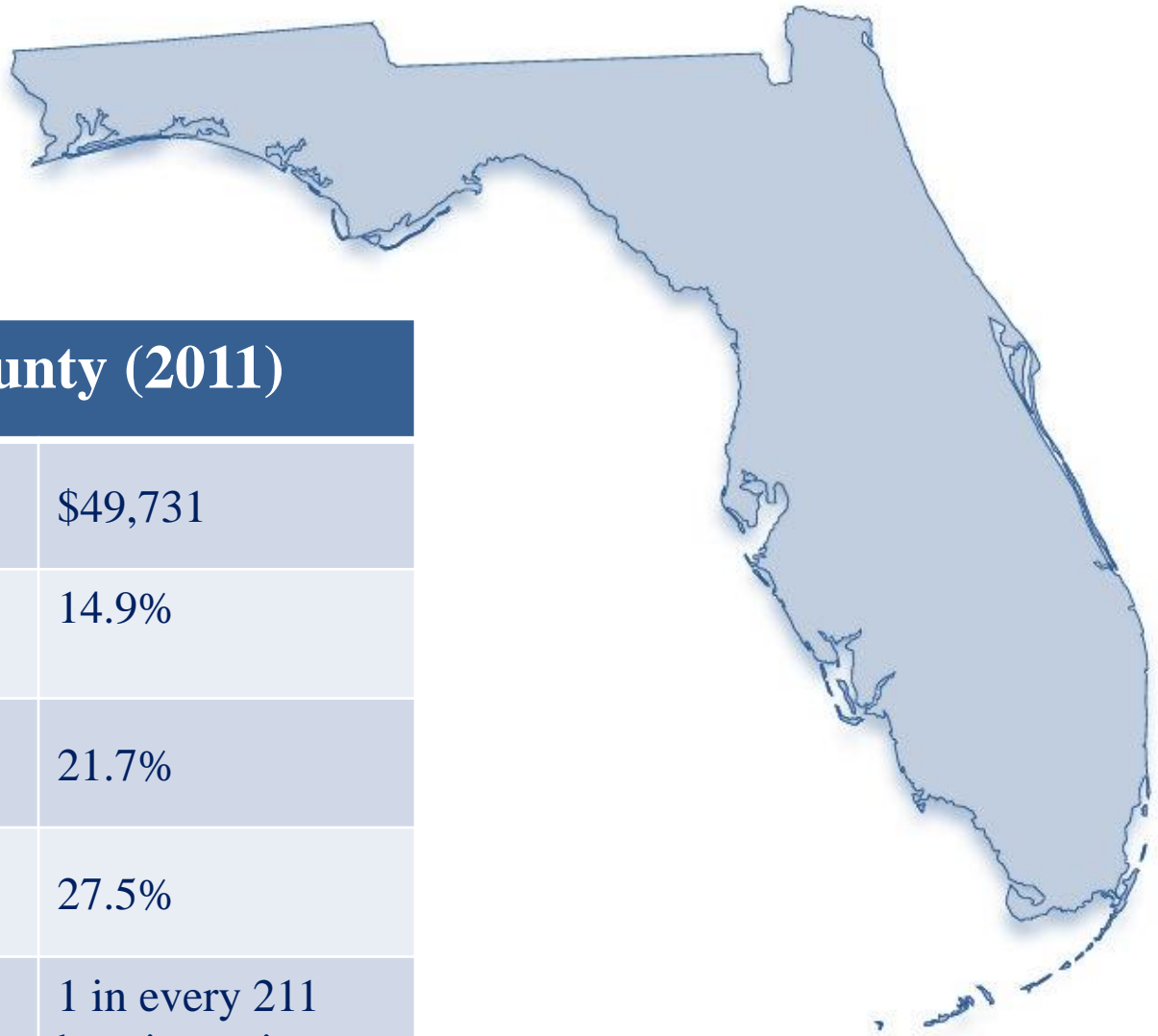


Sen. Bill Nelson (D-FL)



Sen. Marco Rubio (R-FL)

County Characteristics

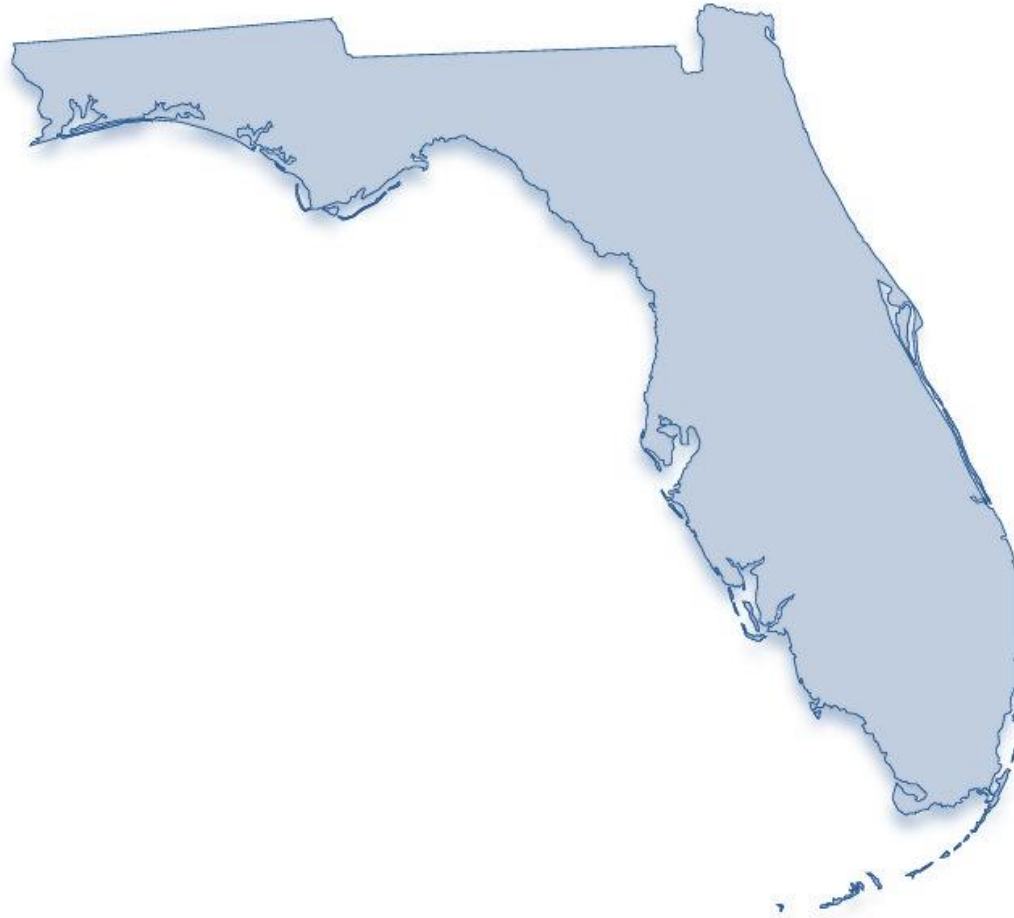


Orange County (2011)	
Median Household Income	\$49,731
People In Poverty	14.9%
Black Population	21.7%
Latino Population	27.5%
Foreclosure Rate	1 in every 211 housing units

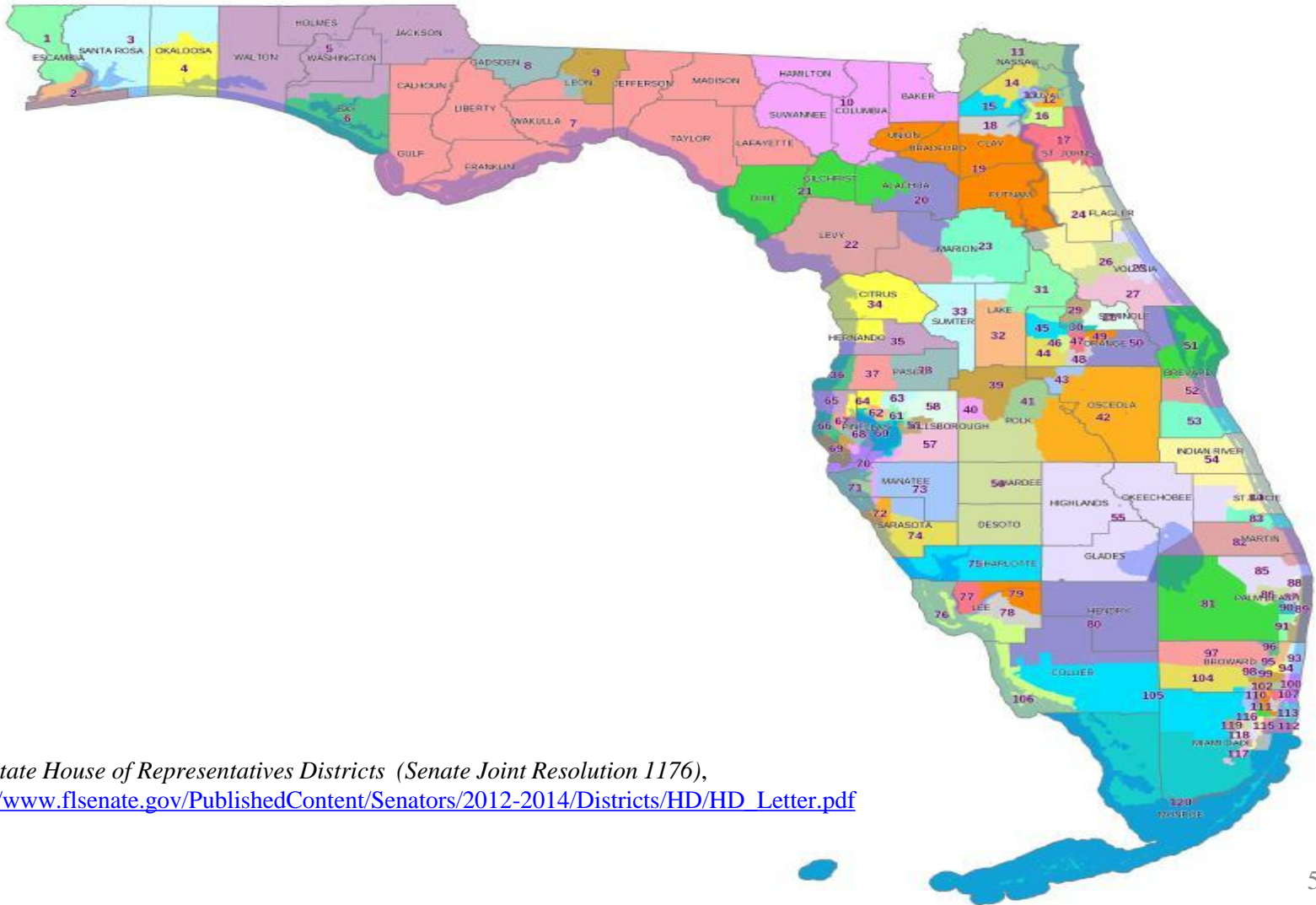
Action Steps

- Research the member's background and characteristics of their district
- Determine strategy for approaching legislator about issue of interest
- Develop talking points for your legislative visit
- Follow up after the legislative visit

Reference Materials

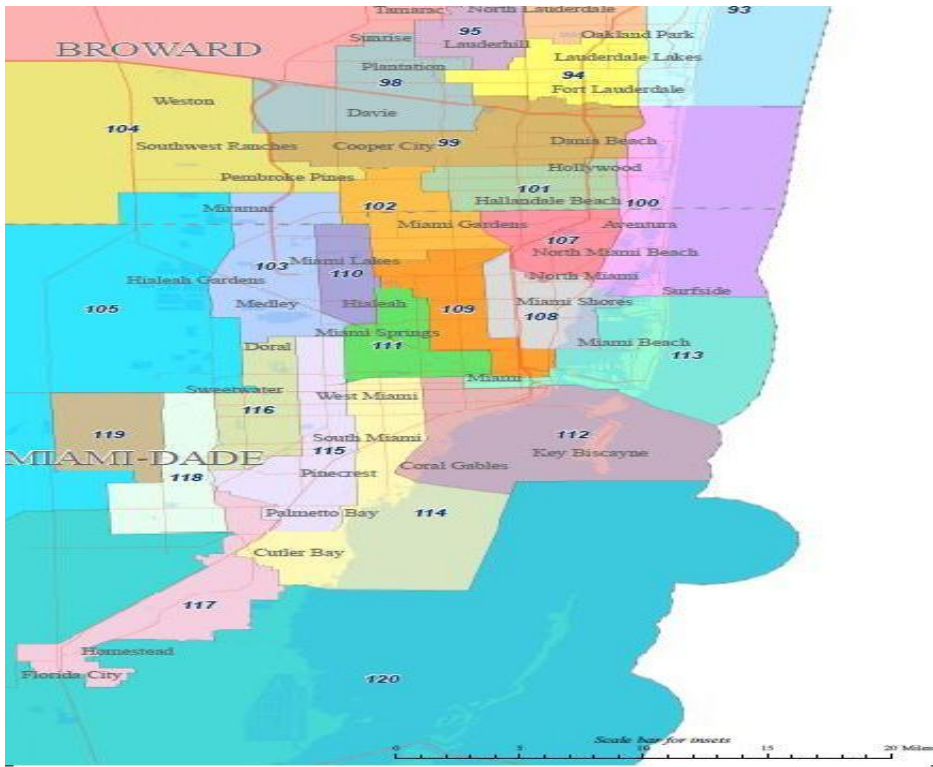
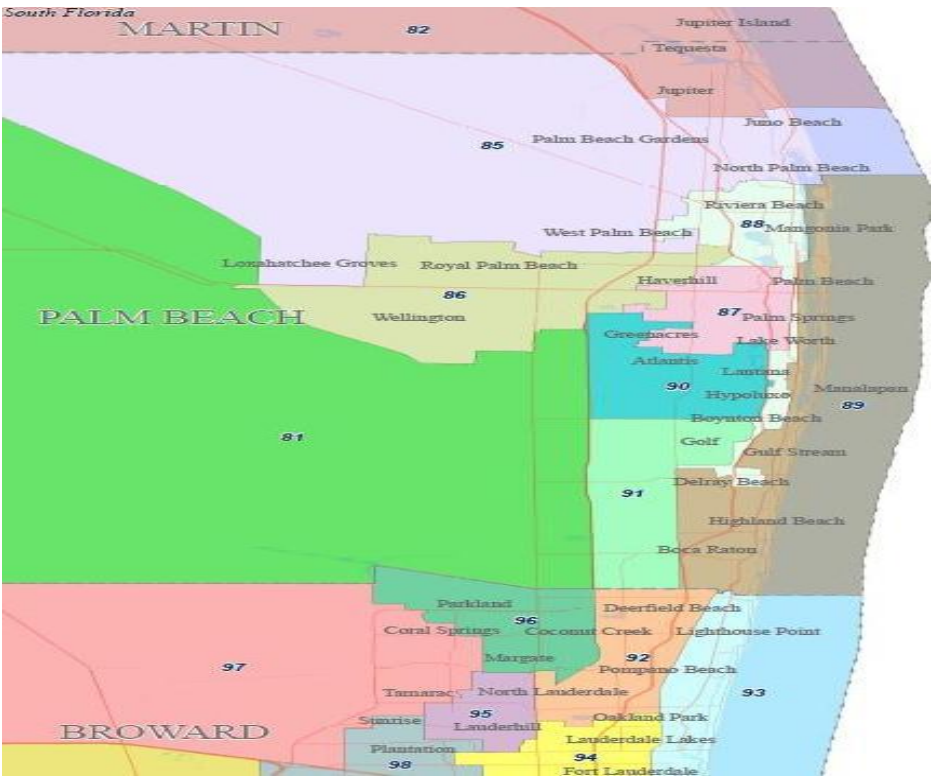


State Districts in Florida House of Representatives (2012)



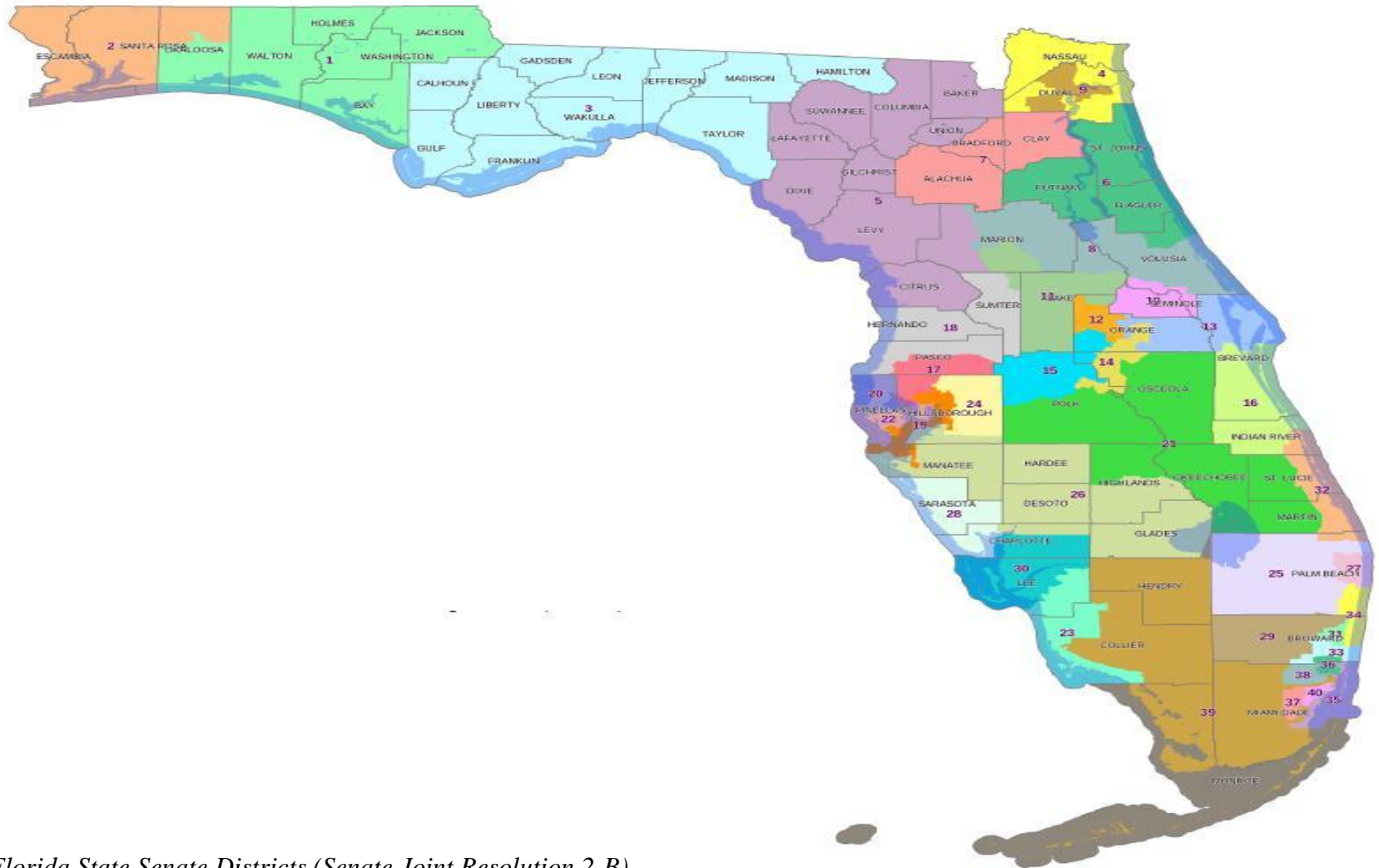
Source: *Florida State House of Representatives Districts (Senate Joint Resolution 1176)*,
available at http://www.flstate.gov/PublishedContent/Senators/2012-2014/Districts/HD/HD_Letter.pdf

State Districts in Florida House of Representatives (South Florida)



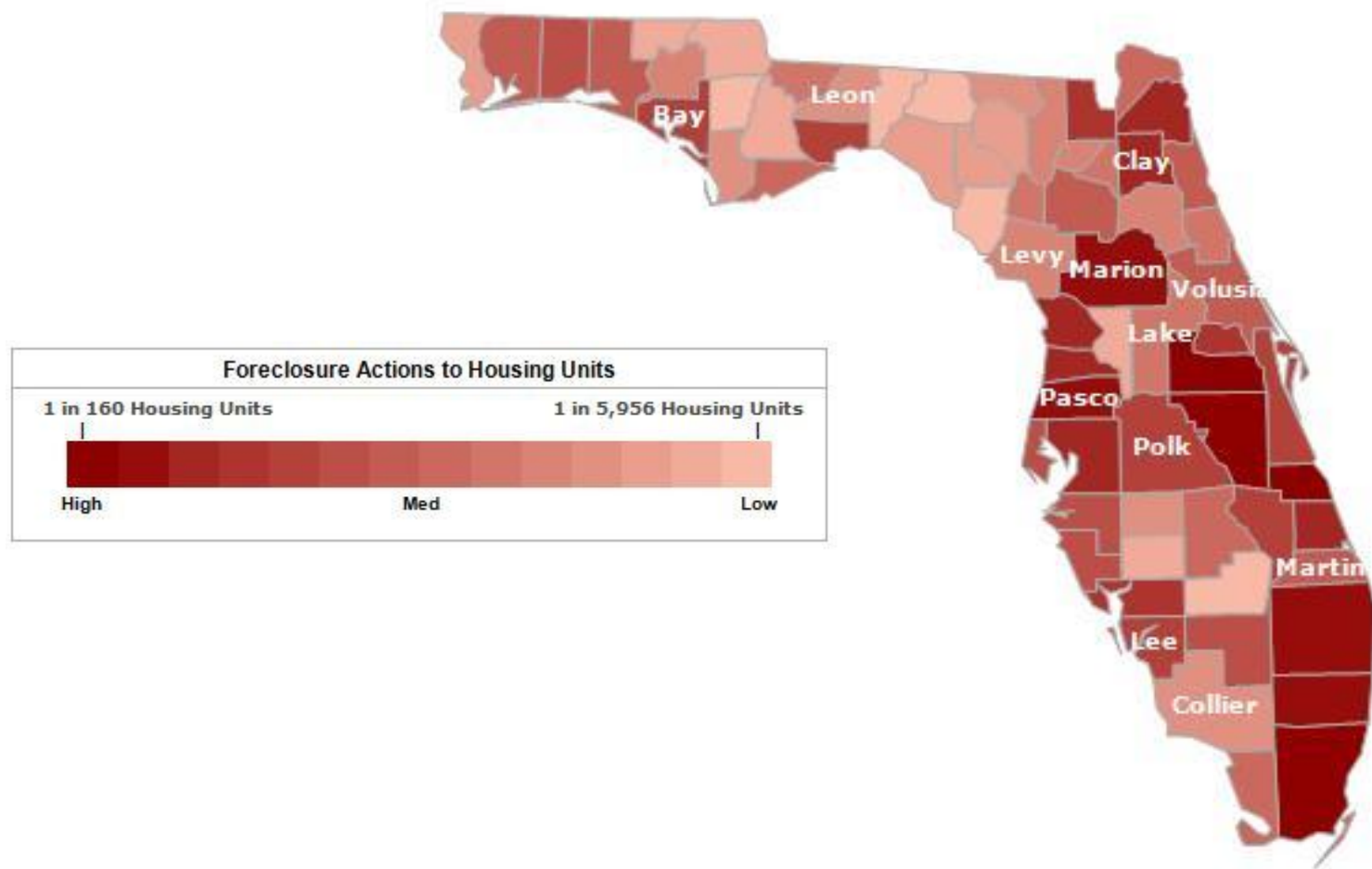
Source: *Florida State House of Representatives Districts (Senate Joint Resolution 1176)*,
available at http://www.flsenate.gov/PublishedContent/Senators/2012-2014/Districts/HD/HD_Letter.pdf

State Districts in Florida Senate (2012)



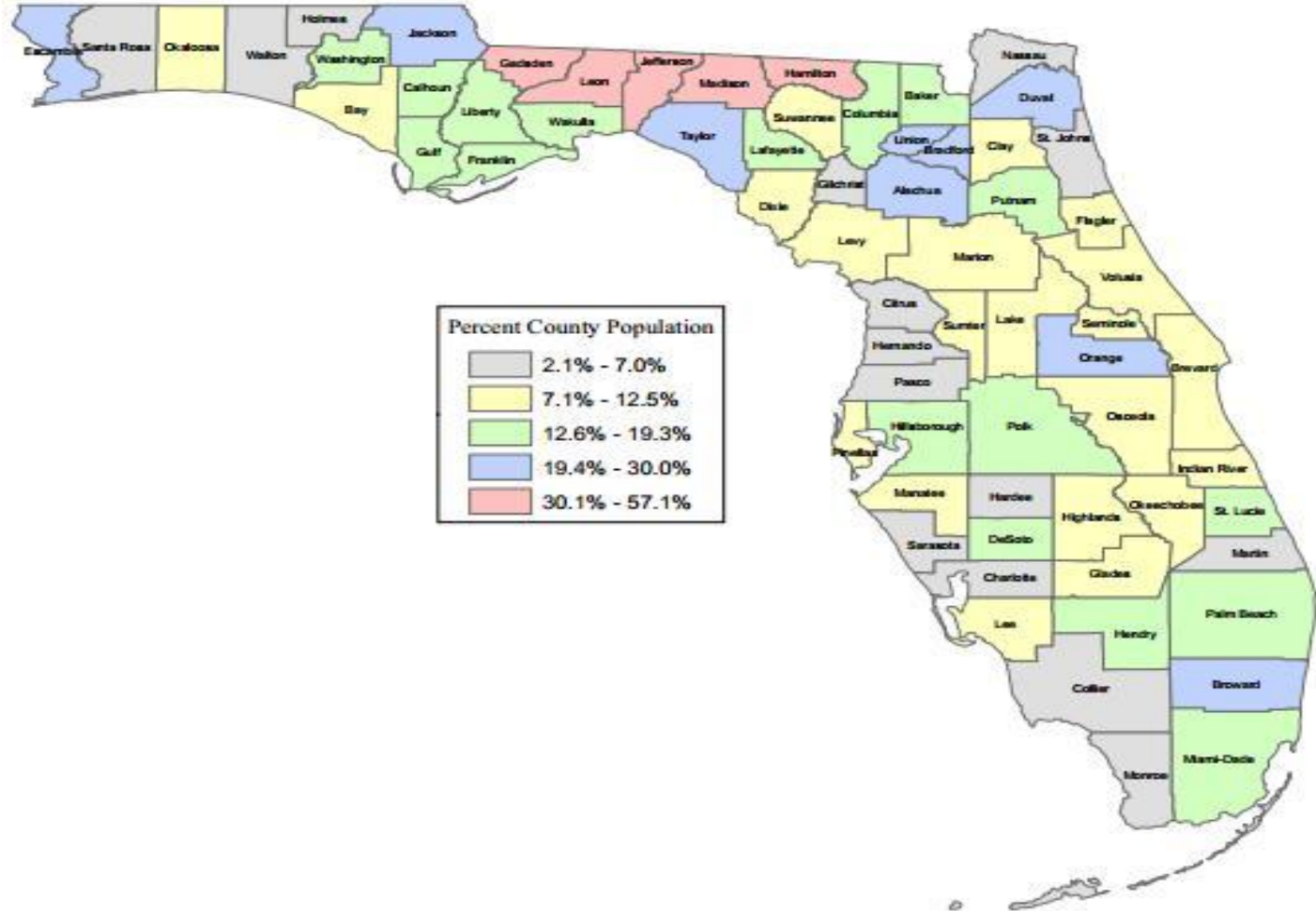
Source: *Florida State Senate Districts (Senate Joint Resolution 2-B)*,
available at http://www.flsenate.gov/PublishedContent/Senators/2012-2014/Districts/SD/SD_Letter.pdf

Foreclosure Rate by County (2013)



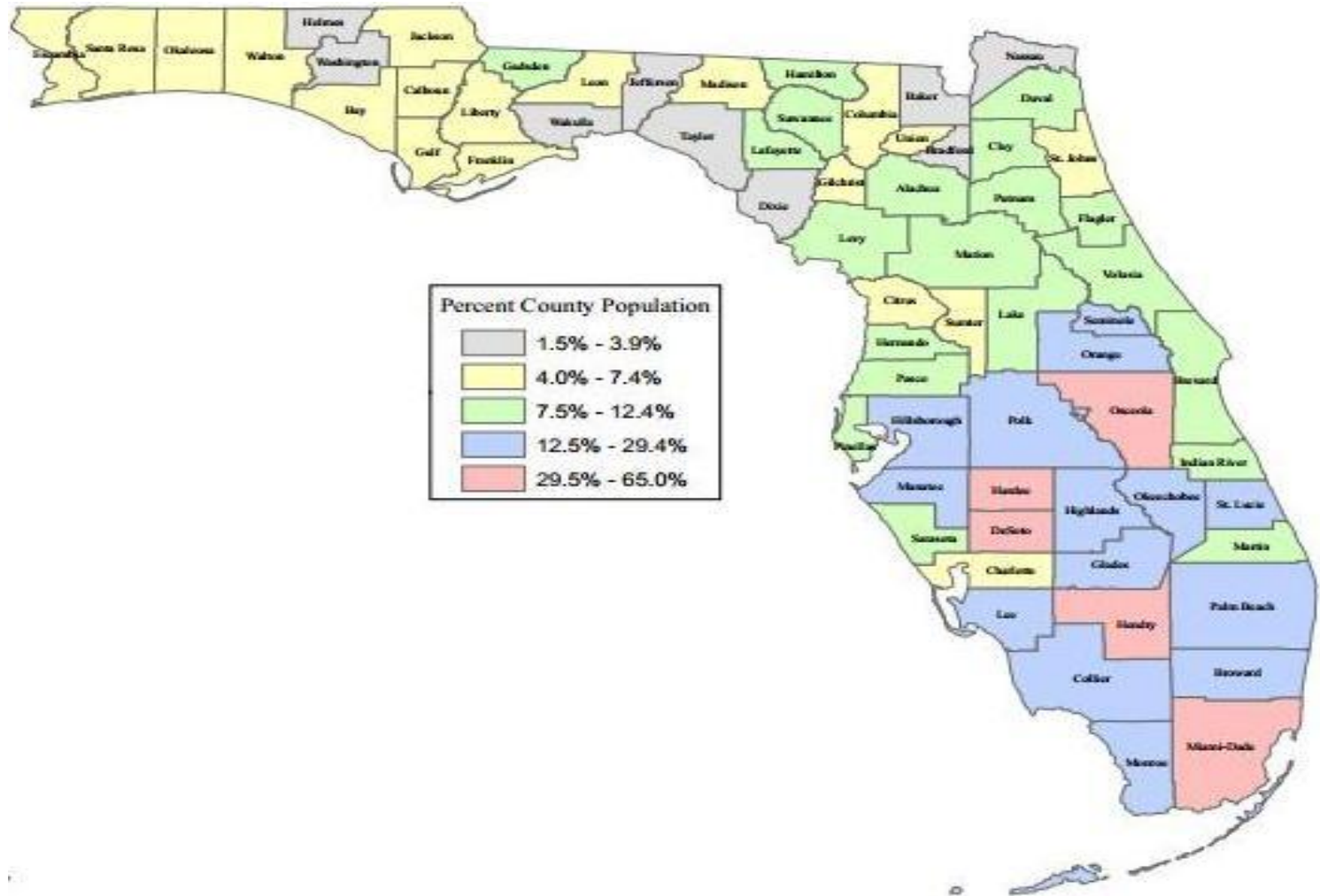
Source: *Real Estate Foreclosure Trends (January 2013)* by Realtytrac, available at <http://www.realtytrac.com/trendcenter/fl-trend.html>

African American Population by County (2010)



Source: *Percent County Population by Race in Florida: 2000 and 2010* by the Florida Legislative Office of Economic & Demographic Research, available at http://edr.state.fl.us/content/population-demographics/2010-census/maps/Census_2010_percentrace_alone.pdf

Latino Population by County (2010)



Source: *Percent County Population by Hispanic or Latino in Florida: 2000 and 2010* by the Florida Legislative Office of Economic & Demographic Research, available at http://edr.state.fl.us/content/population-demographics/2010-census/maps/Census_2010_percenthispanic.pdf